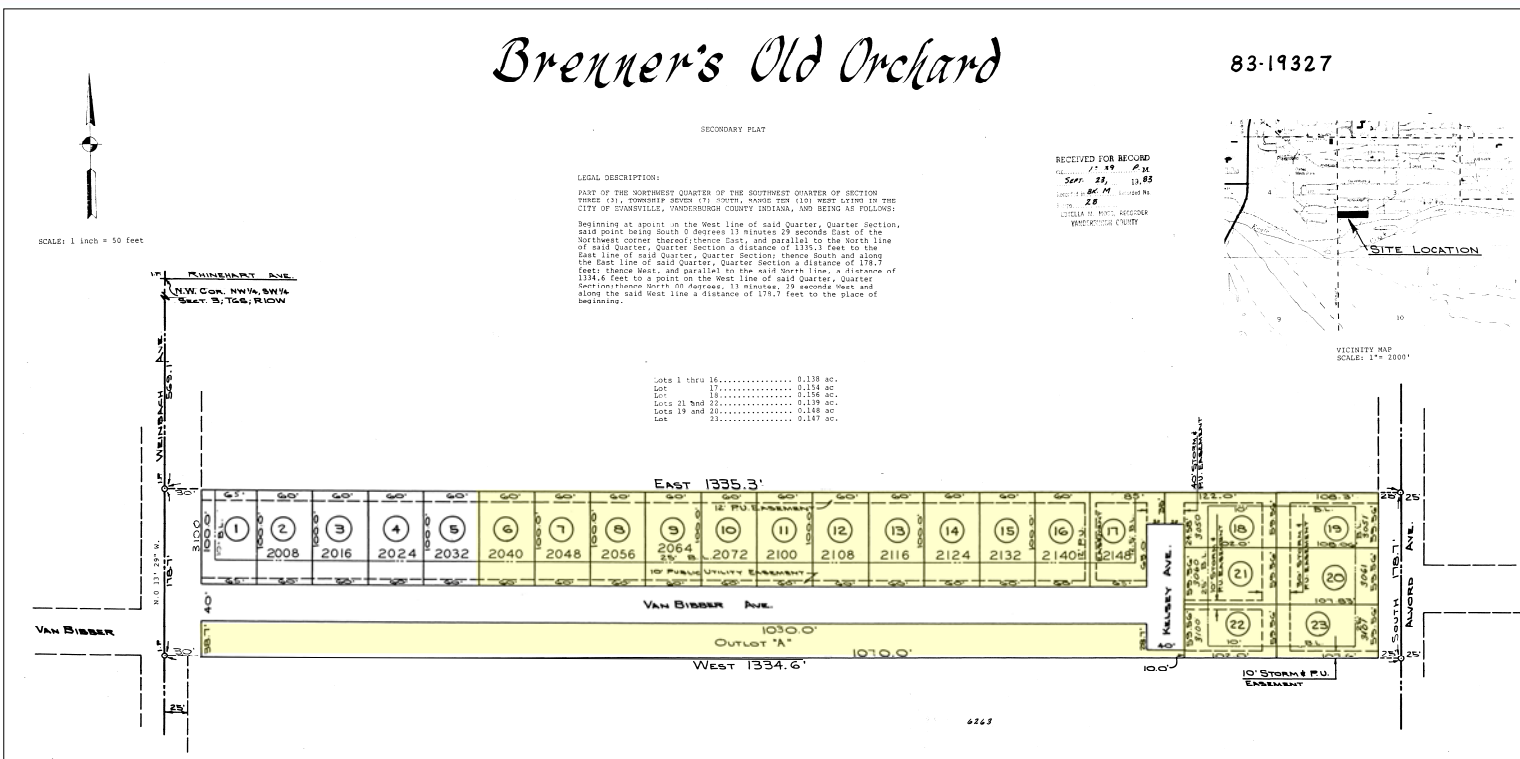


Brenner's Old Orchard

Platted Subdivision, Lots 6-23 & Outlot A
EVANSVILLE, IN 47714

Brenner's Old Orchard

83-19327



- **Sale Price:** \$125,000
- **Lot Size:** 3.45 Acres +/-
- **Zoning:** R-1
- **Annual Taxes:** \$391.82 (2019 Pay 2020)
- **Water/Sewer:** Available
- **Current Use:** Vacant Land
- **Showing:** Drive by
- **Location:** S Weinbach & Van Bibber Ave

Brenner's Old Orchard platted subdivision. Outlot A and lots 6-23 available.

For More Information, Contact:

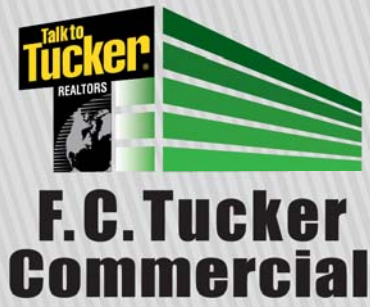
Jeremy Morris, J.D., Broker

Direct: 812.463.2199

Office: 812.473.6677

jeremymorris@fctuckercommercial.com

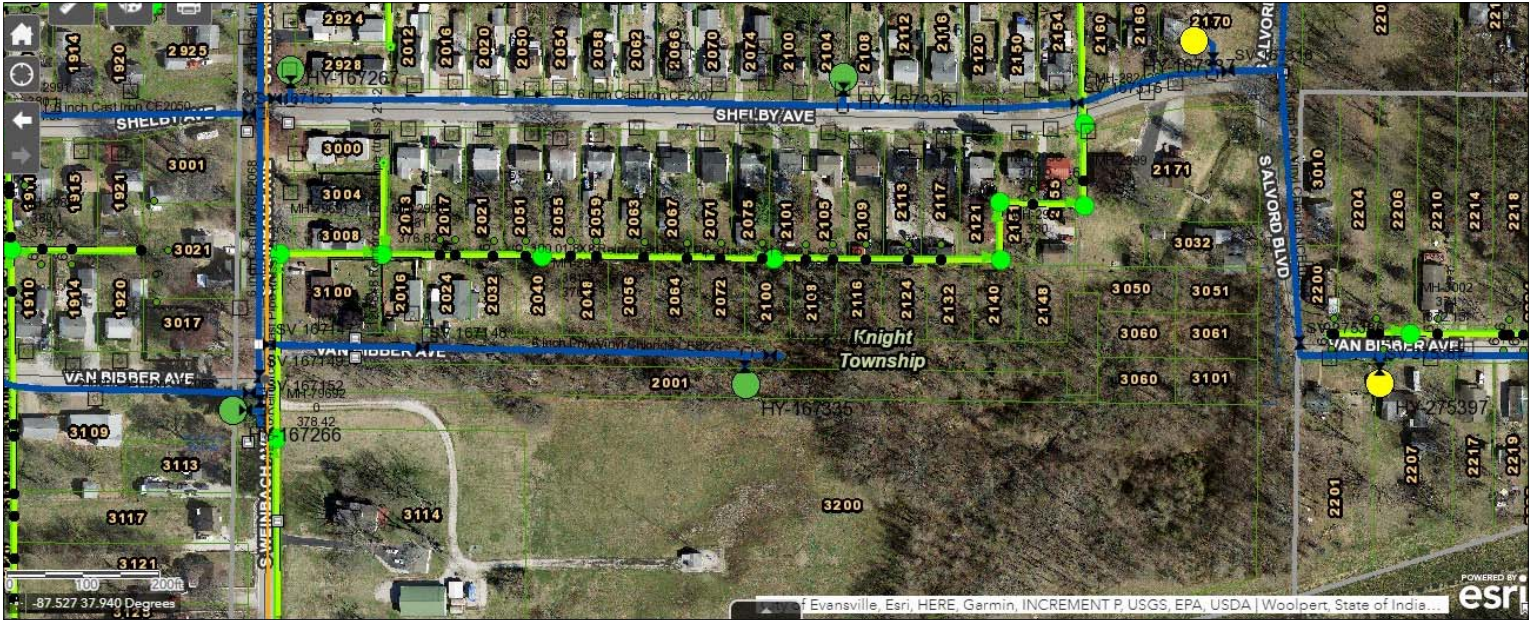






AVAILABLE

Brenner's Old Orchard

Platted Subdivision , Lots 6-23 & Outlot A
EVANSVILLE, IN 47714



LEGEND

-  Public Water Main
-  Sanitary Sewer

For More Information, Contact:

Jeremy Morris, J.D., Broker

Direct: 812.463.2199

Office: 812.473.6677

jeremymorris@fctuckercommercial.com



7820 Eagle Crest Blvd. Suite 200
Evansville, IN • 47715
812-473-6677 • Fax: 812-473-6684



FCTuckerCommercial.com