



**F.C. Tucker  
Commercial**

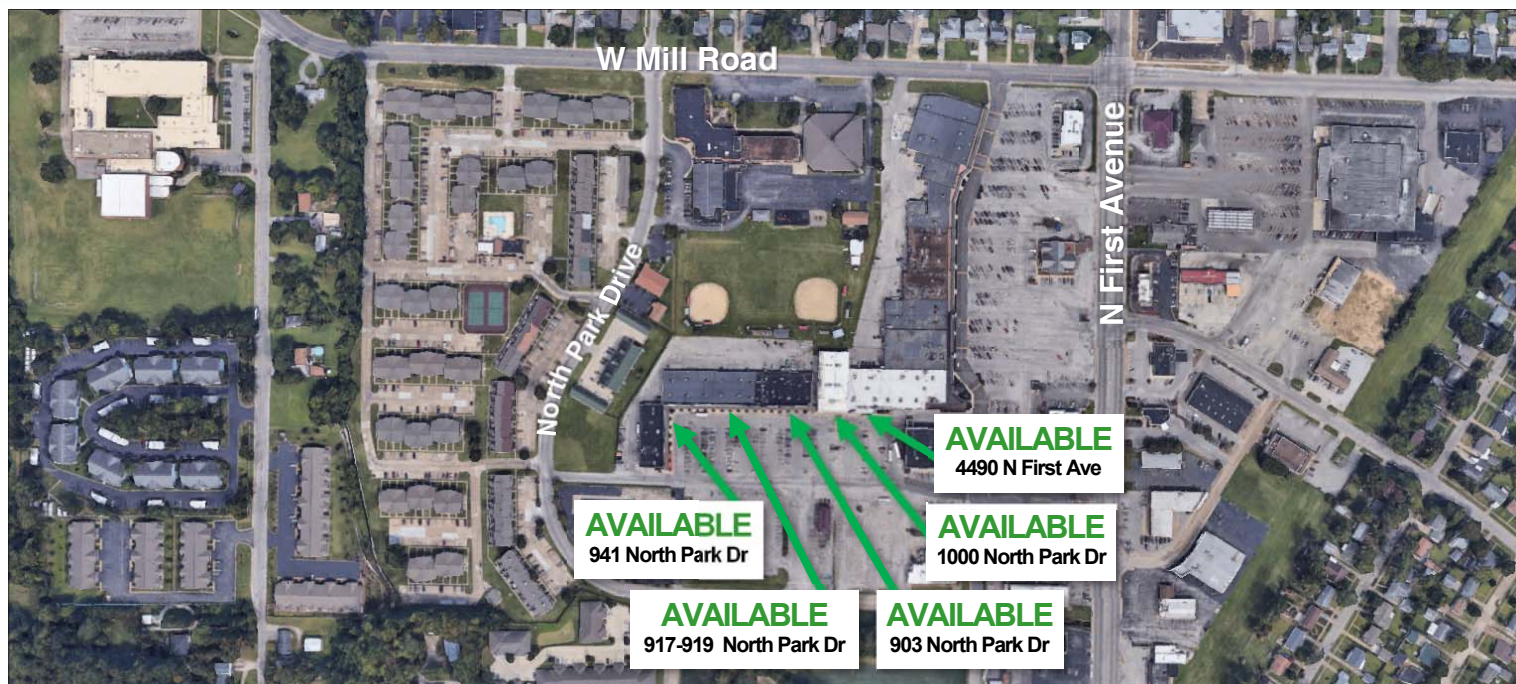
# SPACES FOR LEASE

## North Park Shopping Center

4490 N First Avenue

903, 917-919, 941 & 1000 N Park Drive

EVANSVILLE, IN 47710



• **Available SF:**

*Former Dentist Office*

**903 N Park Dr: 3,095 SF \$12/SF/NNN**

*Former Cottage Florist*

**917-919 N Park Dr: 1,200 SF \$12/SF/NNN**

**1,600 SF \$12/SF/NNN**

**Can be combined: 2,800 SF \$12/SF/NNN**

*Former Kipplee's*

**941 N Park Dr: 5,400 SF \$ 8/SF/NNN**

*Former Theatre*

**1000 N Park Dr: 9,000 SF \$ 8/SF/NNN**

*Former Post Office*

**4490 N First Ave: 1,872 SF \$10/SF/NNN**

• **NNN: \$2 / SF +/-**

• **Year Built: 1968**

• **Zoning: C-4**

• **Water/Sewer: City**

• **Showing: Contact Listing Agent**

Spaces available for lease in the North Park Shopping Center. Strong mix of local and national retailers. The theatre space would be great for a church. Remaining spaces offered as-is. Landlord is willing to do additional build-out for acceptable terms.

### For More Information, Contact:

**Aaron Kendall, CCIM**

**Direct: 812.480.8100**

**Office: 812.473.6677**

**aaronkendall@fctuckercommercial.com**



7820 Eagle Crest Blvd. Suite 200

Evansville, IN • 47715

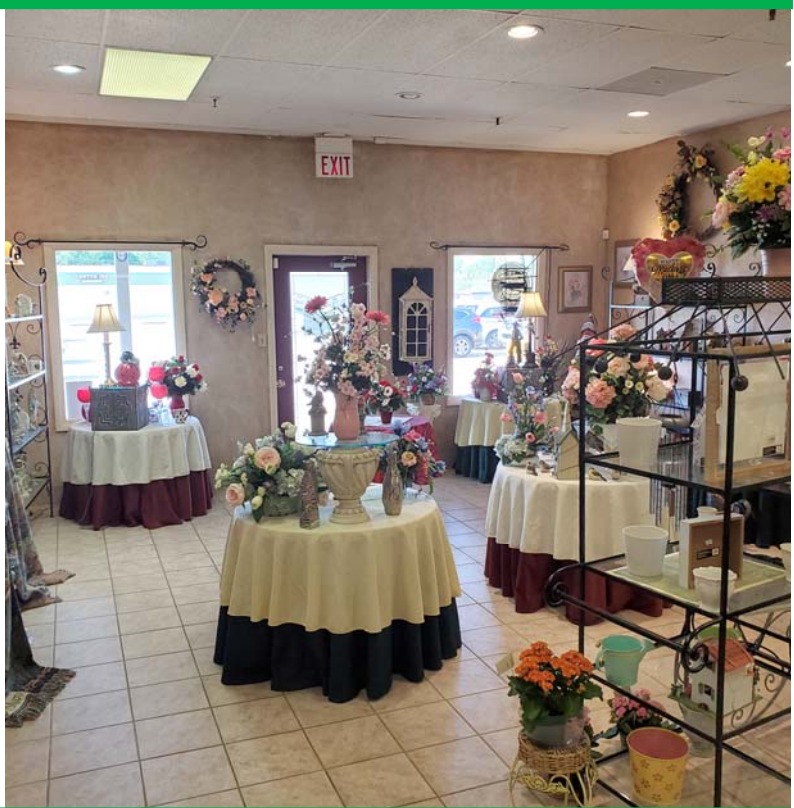
812-473-6677 • Fax: 812-473-6684



**FCTuckerCommercial.com**



**903 N Park Drive • Lease Price: \$12 / SF / NNN • Available SF: 3,095 SF**



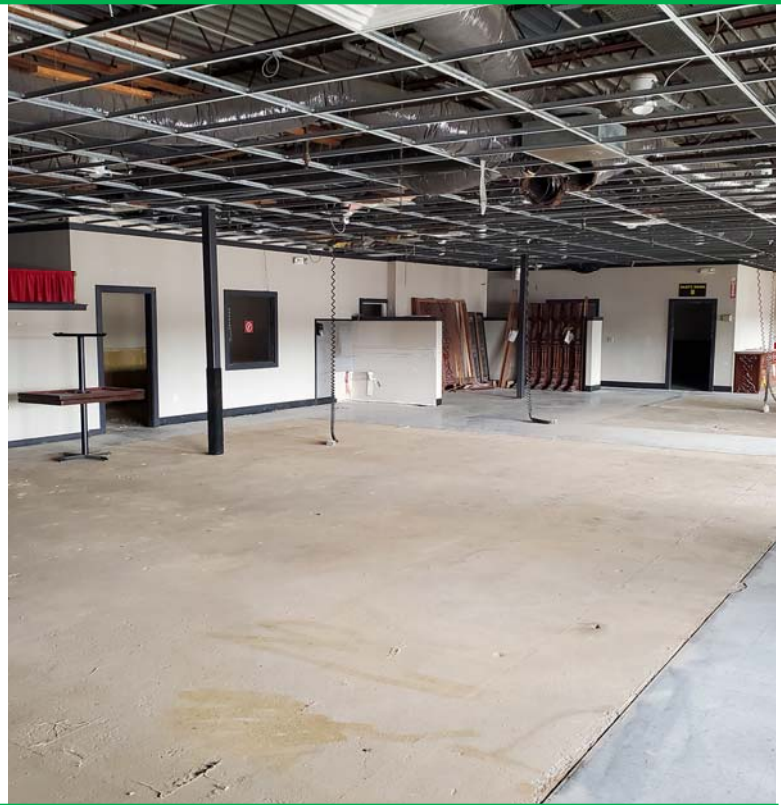
**917-919 N Park Drive • Lease Price: \$12 / SF / NNN • Combined SF: 2,800 SF**

7820 Eagle Crest Blvd. Suite 200  
Evansville, IN • 47715  
812-473-6677 • Fax: 812-473-6684



**FCTuckerCommercial.com**

The information contained herein was obtained from sources we consider reliable. We cannot be responsible, however, for errors, omissions, prior sale, and withdrawal from the market or change in price.



**941 N Park Drive • Lease Price: \$8 / SF / NNN • Available SF: 5,400 SF**



**1000 N Park Drive**

**Lease Price: \$8 / SF / NNN  
Available SF: 9,000 SF**



**4490 N First Avenue**

**Lease Price: \$10 / SF / NNN  
Available SF: 1,872 SF**

7820 Eagle Crest Blvd. Suite 200  
Evansville, IN • 47715  
812-473-6677 • Fax: 812-473-6684



**FCTuckerCommercial.com**

The information contained herein was obtained from sources we consider reliable. We cannot be responsible, however, for errors, omissions, prior sale, and withdrawal from the market or change in price.