

AVAILABLE
1310 Tutor Lane
EVANSVILLE, IN 47715



- **Lease Price:** \$13 / SF / NNN
- **Available SF:** 2,300 - 2,500 SF
- **Lease Term:** 5 Years
- **Year Built:** 1996
- **Zoning:** C-2
- **# of Parking Spaces:** 24 Shared

- **Roof:** Metal
- **# of Restrooms:** 2
- **Water/Sewer:** City
- **Current Use:** Vacant
- **Showing:** Contact Listing Broker

Professional office space on Evansville's east side. This space is ready for a new professional office user to make it their own. The building is in the heart of the growing N Burkhardt Road area surrounded by retail and other professional businesses. Easy access and plenty of parking for clients.

For More Information, Contact:

Kyle Bernhardt

Direct: 812.455.7577

Office: 812.473.6677

kylebernhardt@fctuckercommercial.com



7820 Eagle Crest Blvd. Suite 200
Evansville, IN • 47715
812-473-6677 • Fax: 812-473-6684



FCTuckerCommercial.com

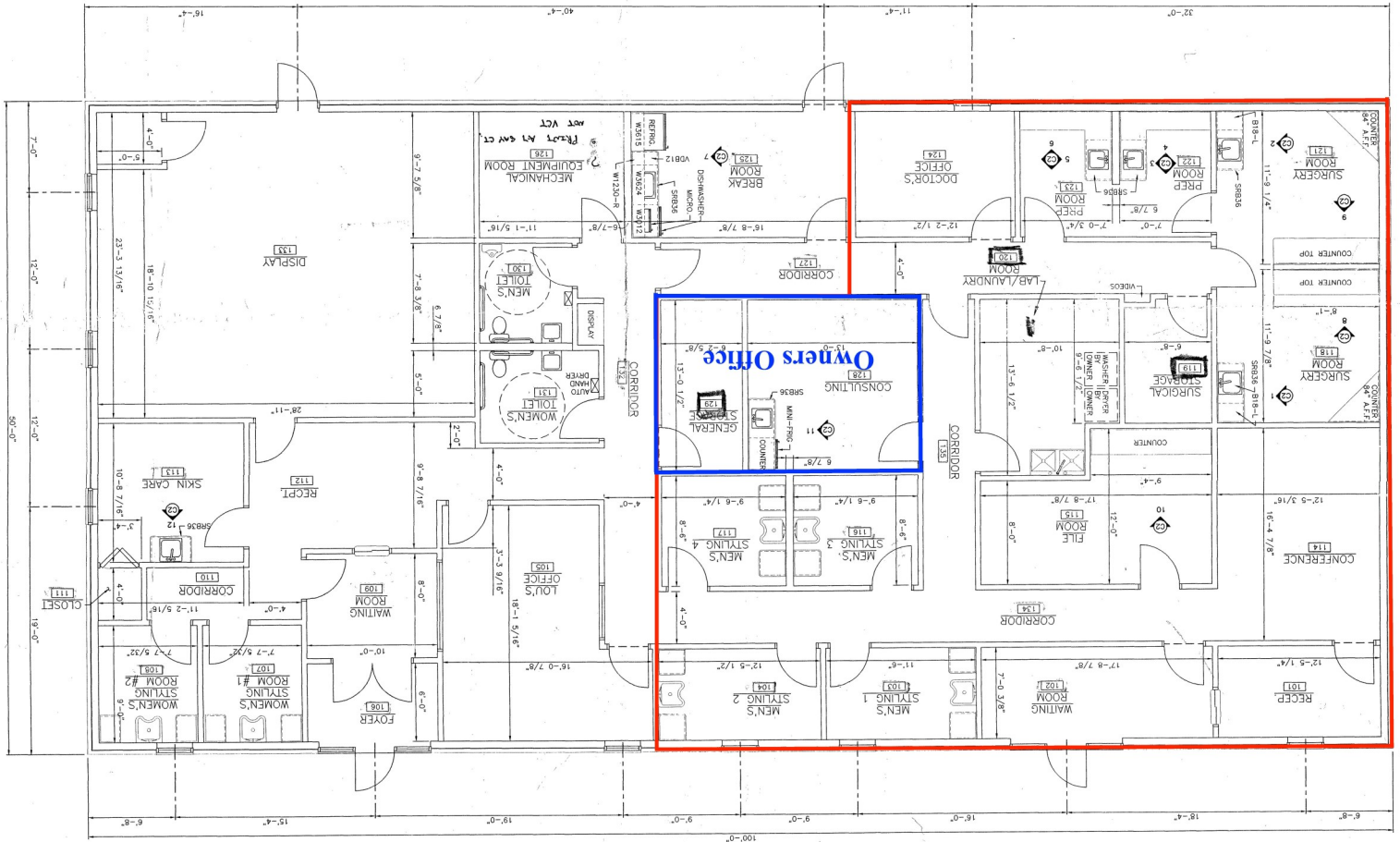
The information contained herein was obtained from sources we consider reliable. We cannot be responsible, however, for errors, omissions, prior sale, and withdrawal from the market or change in price.



**F.C. Tucker
Commercial**

AVAILABLE

**1310 Tutor Lane
EVANSVILLE, IN 47715**



For More Information, Contact:

Kyle Bernhardt

Direct: 812.455.7577

Office: 812.473.6677

kylebernhardt@fctuckercommercial.com



7820 Eagle Crest Blvd. Suite 200
Evansville, IN • 47715
812-473-6677 • Fax: 812-473-6684



FCTuckerCommercial.com

The information contained herein was obtained from sources we consider reliable. We cannot be responsible, however, for errors, omissions, prior sale, and withdrawal from the market or change in price.